

A diverse group of students in a classroom setting. In the foreground, a young woman with blonde hair is looking at a laptop. To her right, a young man with a beard is looking at a book. In the background, other students are visible, some looking at their laptops and others at their books. The scene is brightly lit and has a modern, educational feel.

# Information Society and Education

Irena Brifordová  
Industry Solution Manager Education



# Higher Education Key Challenges



Funding Models



Government Policies & Accountabilities



BYOD/BYOIT/Cloud & Hybrid IT



Unbundled Education



Evolving Student Expectations

# Higher Education Top Business Trends



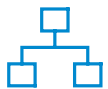
Reinventing Credentials



Analytics Everywhere



Personalization in Education



Ranking



Revenue Diversification





# Higher Education Top Technology Trends



Digital Credentials



Predictive Analytics



VR/AR



Next-Generation SIS



AI Conversational Interface

# The world of the future looks very different for our students

**65% of students**

in grade school will perform jobs that have not been invented yet!

**47% of current jobs**

are expected to be taken over by machines during the next two decades

**6.5 million**

new IT jobs by 2022, most in cloud-related technology fields

Only **33%** of the world's demand for employees with technology skills is being met

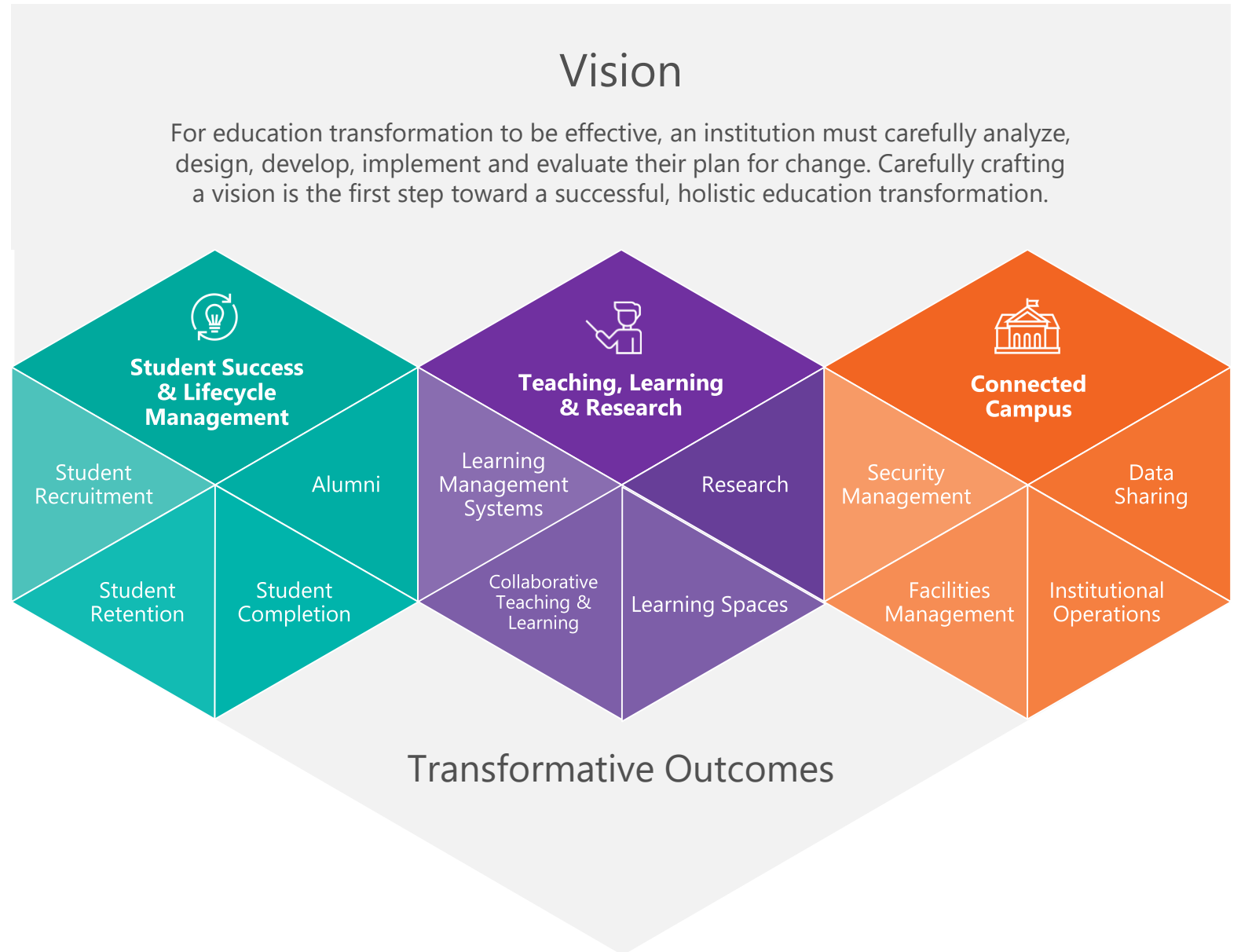
Percentage of jobs requiring technology skills will **increase to 77%** in less than a decade



# Education Transformation Framework

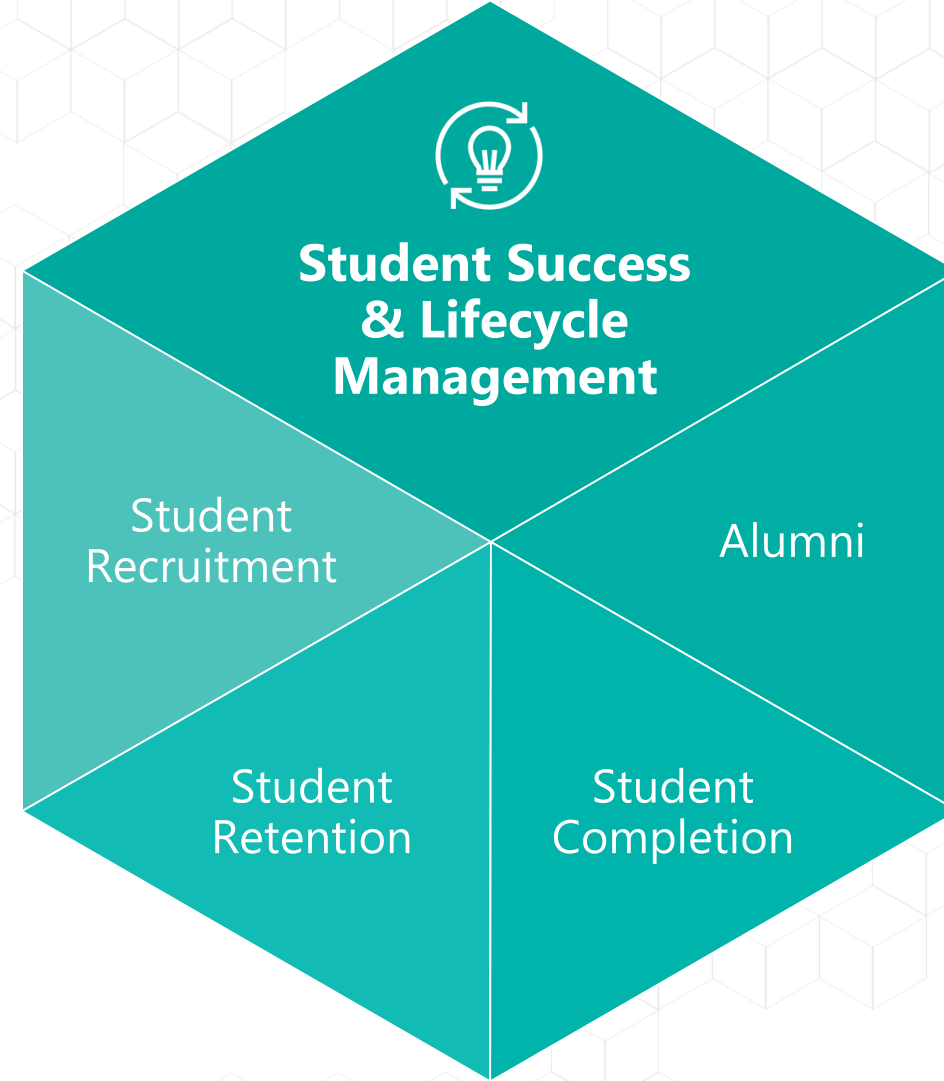
The Microsoft Education Transformation Framework provides practical advice to develop a strategy for digital transformation; supporting new approaches to:

- Manage student success and lifecycle
- Modernize teaching and learning
- Empower research
- Provide efficient and effective physical and digital infrastructure



Transform how you attract students, drive student outcomes, and connect with students in lifelong relationships

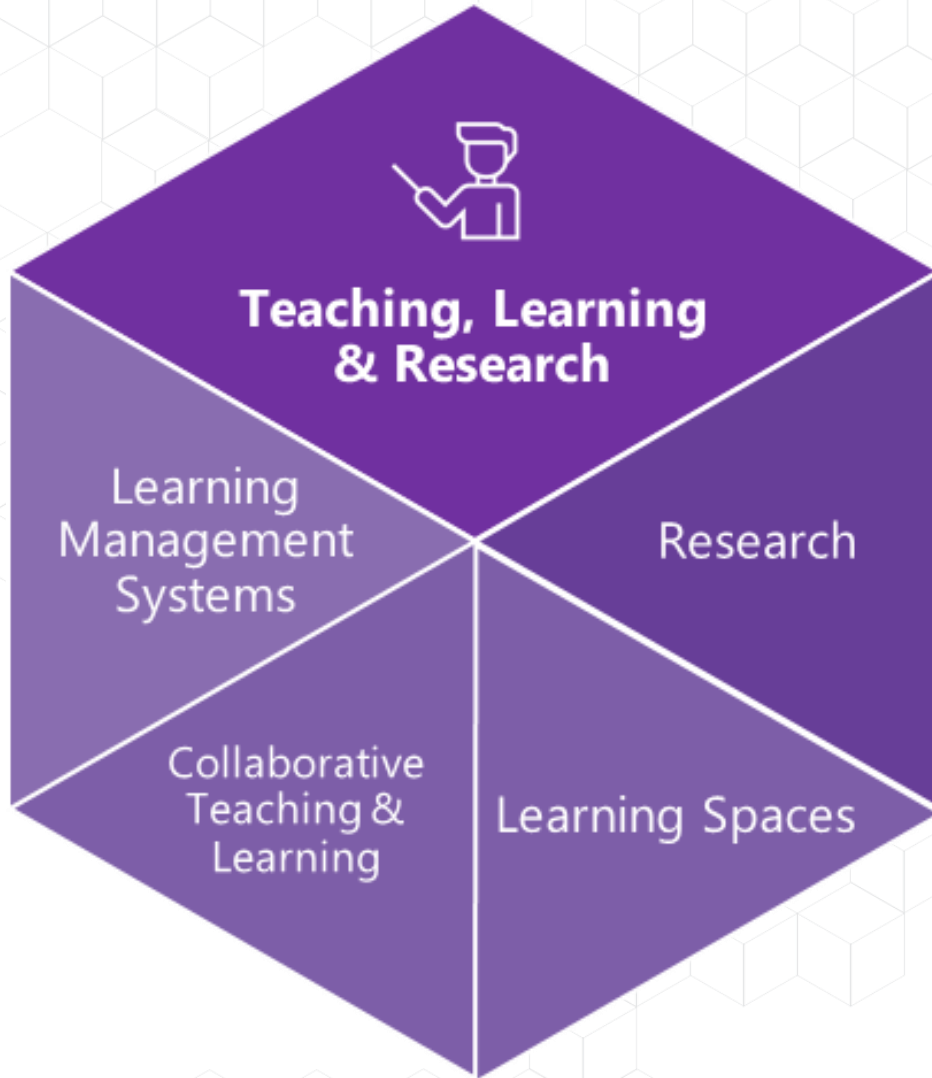
From recruitment and enrollment, on through the academic years and into alumni relationships, Student Success & Lifecycle Management goes to the heart of what it means to offer an optimal educational experience for the long term, underscored by an honest and thorough assessment of institutional performance and student outcomes.



# Build a culture that empowers academics and researchers to do their best work

Modern Teaching, Learning & Research leverages new technologies and enables new processes that accelerate curriculum exploration and research breakthroughs.

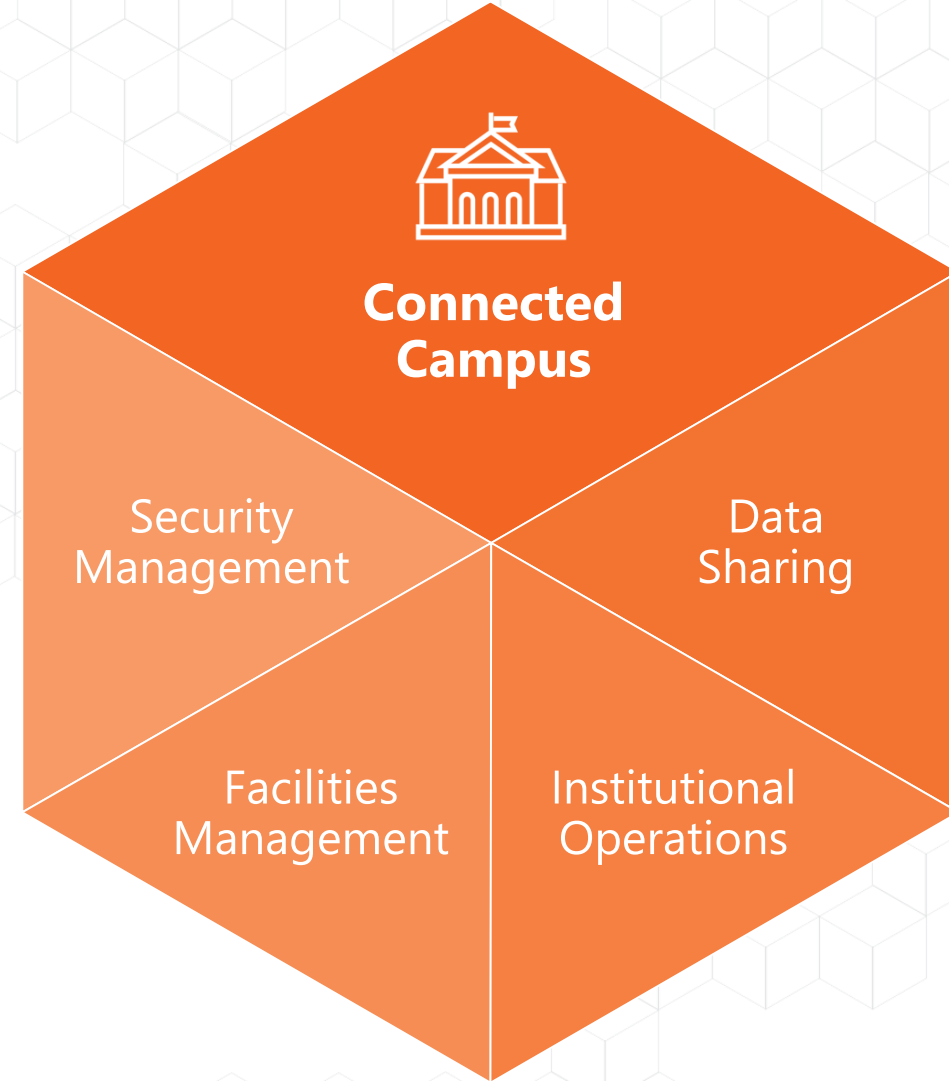
It nurtures a growth mindset in students, emphasizing future-ready skills to help them thrive in jobs not yet invented. It enables universities to empower their research communities to achieve their best work.



# Rethink how to configure, optimize and manage your campus resources

College and university campuses must continually evolve to meet the growing and changing needs of students globally.

Campuses everywhere must support fluid, collaborative and personalized learning environments, while becoming more sustainable, efficient and secure.





Thank You

